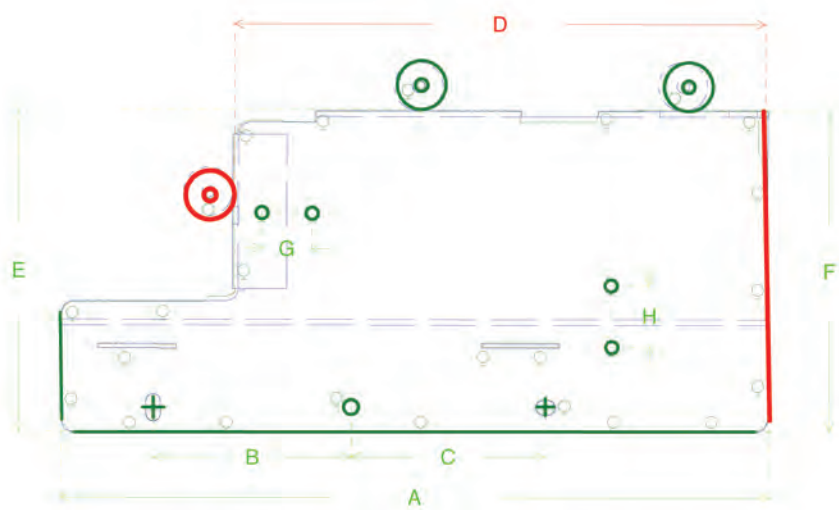


LaserQC[®] enters the 3rd dimension

Virtek LaserQC is proud to introduce its latest non-contact technology.

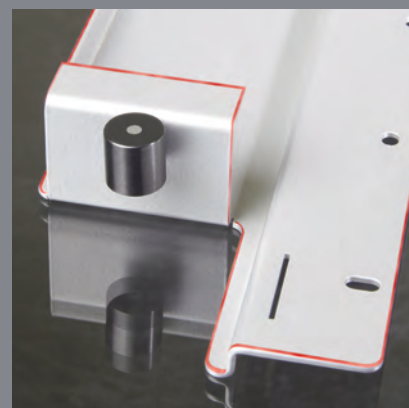
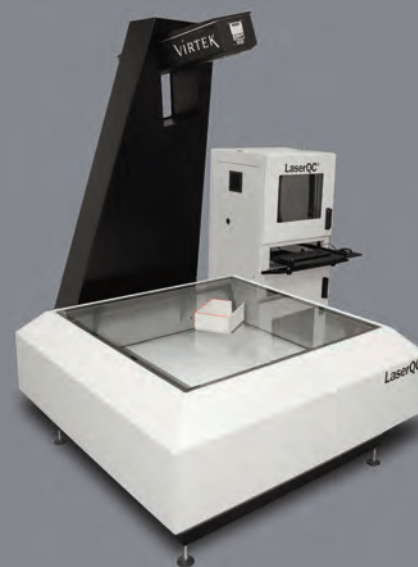
The Automatic Form Measurement System (AFM) 3D Laser accurate measurements are just a click away.

Now you can measure heights, raised features, edge-to-edge or hole-to-hole on interior flanges. The AFM system virtually allows you to measure any formed feature you can measure with calipers, height gauge or a digital protractor. Our new system virtually replaces hand measurement tools and makes 3D measurement as simple as the click of a mouse.



The new LaserQC AFM system still has all the functionality of our 2D system while accurately measuring heights and raised features with the speed and accuracy you've come to expect from our 2D system. With a few clicks of a mouse, you can attain better, unbiased results, eliminating the need for clumsy hand tools and human error. This powerful new tool also has enhanced reporting and data collection, making the QC process painless and automatic for your staff and ending the QC bottleneck – right on the shop floor. With confidence, you can ensure that all required inspection occurs when you want it, with results that you can rely on.

Call your local LaserQC Representative TODAY at 1-800-684-7835.



VIRTEK
A Gerber Technology Company

Detailed specifications are outlined below.

Scanning Accuracy*	$\pm 0.05\text{mm}$ (0.002")* in the flat and $\pm 0.25\text{mm}$ (0.010")* for formed inspection
Maximum Part Thickness	200mm (8.0")
Maximum Part Weight	90kg (200lbs)
Calibration	Automated
Maximum Part Size (Single Scan)	1220mm x 1220mm (48" x 48")
Oversize Parts	Capable, with merged scan feature
Overall Dimensions (LxWxH)	2007mm x 1651mm x 2440mm (79" x 65" x 96")
Operating Environment	10°C - 38°C (50°F - 100°F)
Power Requirements	110V/60Hz or 240V/50Hz
Laser Device and Output	Laser diode device with maximum 4.5mW output
Laser Class	Class IIIa, meeting the 21 CFR 1040 standard for CDRH certification in North America Class 2M, meeting the 60825-1:1993+A1:1997+A2:2001 standard for CE certification in Europe
Software	LaserQC®. Includes inspection, SPC and reverse engineering
Computer System	Current model PC with monitor, color printer, keyboard and mouse, Surge Protector & Network Cable
Operating System	Windows® XP
Warranty	One year on hardware and software
Extended Warranty	Optional
Extended Support Program	Optional
Part Stabilizer	Optional
Due to continuous product improvement, specifications are subject to change without notice. (*) Accuracy results are based on tests conducted on standard production machines using a laser-cut part. Results may vary.	

Virtek Vision International Inc., 785 Bridge Street, Waterloo, Ontario N2V 2K1
Toll free (in North America): 1 800 684 7835
Tel: (+1) 519 746 7190 Fax: (+1) 519 746 3383
Email: laserinspection@virtekvision.ca
Visit us at www.virtek.ca

VIRTEK
A Gerber Technology Company